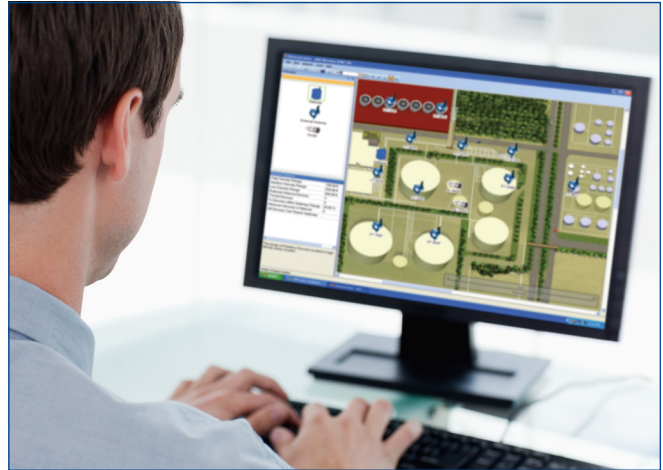


SNAP-ON™ Applications

- Gain even more value from your AMS Device Manager system
- Provides advanced information and diagnostic functionality
- Add to your AMS Device Manager system as your needs require



Gain additional diagnostics and configure advanced devices with SNAP-ON™ applications to AMS Device Manager.

Overview

AMS Device Manager reduces commissioning and maintenance expenses while improving plant availability and reliability. With AMS Device Manager, device configuration is simple and user-friendly. Setting up a new device configuration is as easy as a couple of clicks. The Audit Trail automates documentation around device tasks, capturing when a change was made and who made it.

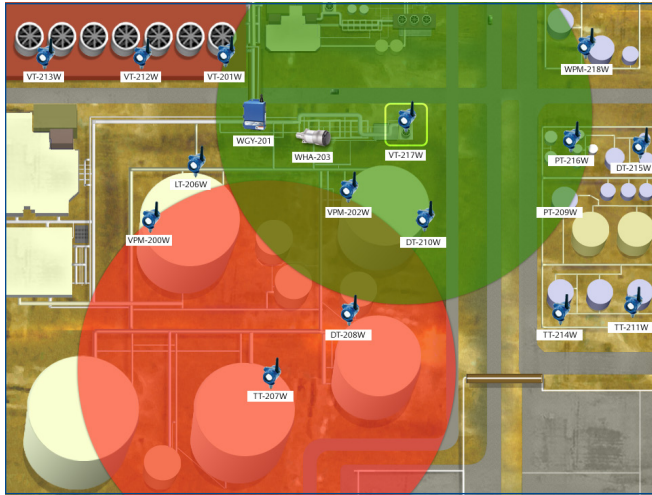
When your intelligent field devices are online with AMS Device Manager, you will be able to see and identify problems before they affect your process and the quality of your product. By delivering accurate, real-time information, AMS Device Manager saves you time and money.

SNAP-ON™ Applications Extend Predictive Diagnostics

AMS Device Manager SNAP-ON™ applications are recommended to gain advanced information and diagnostic functionality for a device or group of devices.

SNAP-ON applications include:

- AlertTrack™
- AMS ValveLink™
- AMS Wireless
- Calibration Assistant
- Rosemount Engineering Assistant
- Meter Verification
- QuickCheck™



Using an aerial image of your facility, the AMS Wireless SNAP-ON application allows you to plan your network and validate it against best practices.

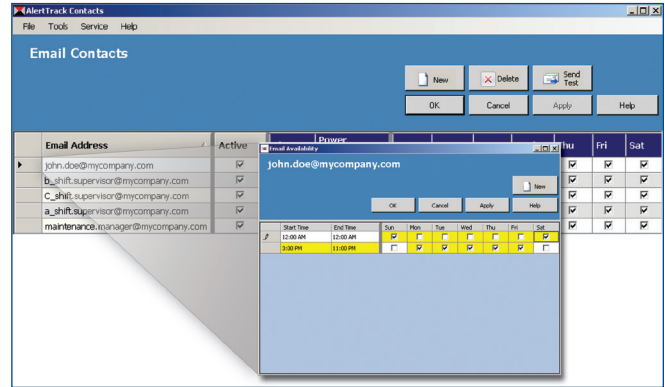
AlertTrack

The AlertTrack SNAP-ON application gives you visibility to the health of your field devices and documentation of parameter changes. Group multiple devices and set parameters to be scanned or documented, or analyze trends to identify problem assets. Route alerts to your cell phone or mobile device for on-the-go notification of device health or process conditions. The AlertTrack SNAP-ON application helps you to identify the root cause of a problem so you can correct the issue before equipment is damaged.

AMS ValveLink™

The AMS ValveLink SNAP-ON application gives you the ability to work with HART® and FOUNDATION™ Fieldbus FIELDVUE™ digital valve controllers. It provides an easy-to-use PC environment for diagnosing the operating characteristics of DVC2000, DVC5000, DVC5000f, DVC6000, DVC6000f, DVC6200, and DVC6200f series digital valve controllers.

AMS ValveLink monitors the health of the valve assembly and provides customized diagnostics for advanced troubleshooting. You can detect problems with air leakage, valve assembly friction and deadband, instrument air quality, loose connections, supply pressure restriction, and valve assembly calibration. When a problem is identified, AMS ValveLink provides a description of the problem and severity indicator, a probable cause, and a recommended action.



Set alert parameters and route to the right people at the right time using the AlertTrack SNAP-ON application.

AMS Wireless

The AMS Wireless SNAP-ON application gives you more power to manage your wireless networks. Plan your networks and validate them against recommended design practices. After your wireless networks are installed, you can graphically view communication and status, allowing you to identify any potential trouble spots with predictive diagnostics.

AMS Wireless SNAP-ON application will display the communication relationships between devices, giving you a comprehensive overview of your networks. When using multiple wireless gateways, the AMS Wireless SNAP-ON can analyze each network and identify how to re-assign devices in order to improve communications. Comprehensive reports will keep your organization informed on wireless design as well as key network performance indicators.

Calibration Assistant

The Calibration Assistant SNAP-ON application interfaces with documenting calibrators to manage the calibrations of HART, FOUNDATION Fieldbus, IEC-approved WirelessHART®, and conventional devices. It allows you to easily group your devices into test schemes and calibration routes for maximum efficiency.

Transfer data between your calibrator and AMS Device Manager to eliminate manual records and the possibility of errors. By using a self-documenting calibrator, you can also automatically check As-Found/As-Left information into the AMS Device Manager database. Access the calibration history of each device as well as generate calibration certificates and reports if you need hard copy documentation. The Calibration Assistant SNAP-ON

application gives you more accurate calibration data by reducing reporting errors and extending the time between calibrations.

Rosemount Engineering Assistant

The Rosemount Engineering Assistant SNAP-ON application enables you to perform extended configuration and test calculation functions on HART and FOUNDATION Fieldbus Rosemount® 3095 MultiVariable™ transmitters, as well as HART Rosemount 3051S MultiVariable transmitters.

The Rosemount Engineering Assistant SNAP-ON application provides faster setup, reduced chances of improperly- configured flow transmitters, and accurate device measurements.

Meter Verification

The Meter Verification SNAP-ON application gives you the ability to verify and document the performance and overall health of your Micro Motion® Coriolis mass flowmeters from the comfort of your control room. Meter verification tests can be scheduled to run in advance so you can be proactive in your maintenance efforts.

The Meter Verification application allows you to check and capture device configuration and zero calibration level, as well as sensor structure, electronics, and signal processing for a complete verification of meter performance. Trend, report, and email test results for complete test traceability and easy data management.

QuickCheck

The QuickCheck SNAP-ON application lets you fix the output of multiple devices for system interlock checking. The QuickCheck SNAP-ON application makes it fast and easy to check multiple devices at one time. You can also save the steps to easily run them again.

Third Party Applications

Emerson also integrates third party applications such as Masoneilan’s ValVue, and Flowserve’s ValveAnalysis SNAP-ON applications. AMS Device Manager supports Emerson’s commitment to openness and integration of your plant assets.

Contact your local Emerson sales representative for more information.

Ordering Information

Description	Part Number
AlertTrack SNAP-ON Application	AW7076ALxxxxx; where xxxxx refers to the number of tags
AMS Valvelink SNAP-ON Application	AW7071VLxxxxx; where xxxxx refers to the number of valves
AMS Wireless SNAP-ON Application	AW7082WGxxx; where xxx refers to the number of gateways
Calibration Assistant SNAP-ON Application	AW7080CAxxxxx; where xxxxx refers to the number of tags
Engineering Assistant SNAP-ON Application	AW7072EA
Flowserve ValveAnalysis SNAP-ON Application	AW7091FVxxxxx; where xxxxx refers to the number of tags
Masoneilan ValVue SNAP-ON Application	AW7090MN01xxxxx; where xxxxx refers to the number of tags
Meter Verification SNAP-ON Application	AW7081MMV
QuickCheck SNAP-ON	AW7075QCxxxxx; where xxxxx refers to the number of tags

©2024, Emerson. All rights reserved.

The Emerson logo is a trademark and service mark of Emerson Electric Co. The AMS logo is a mark of one of the Emerson family of companies. All other marks are the property of their respective owners.

The contents of this publication are presented for informational purposes only, and while diligent efforts were made to ensure their accuracy, they are not to be construed as warranties or guarantees, express or implied, regarding the products or services described herein or their use or applicability. All sales are governed by our terms and conditions, which are available on request. We reserve the right to modify or improve the designs or specifications of our products at any time without notice.

Contact Us

 www.emerson.com/contactus